

All Pages Of This Edition Approved

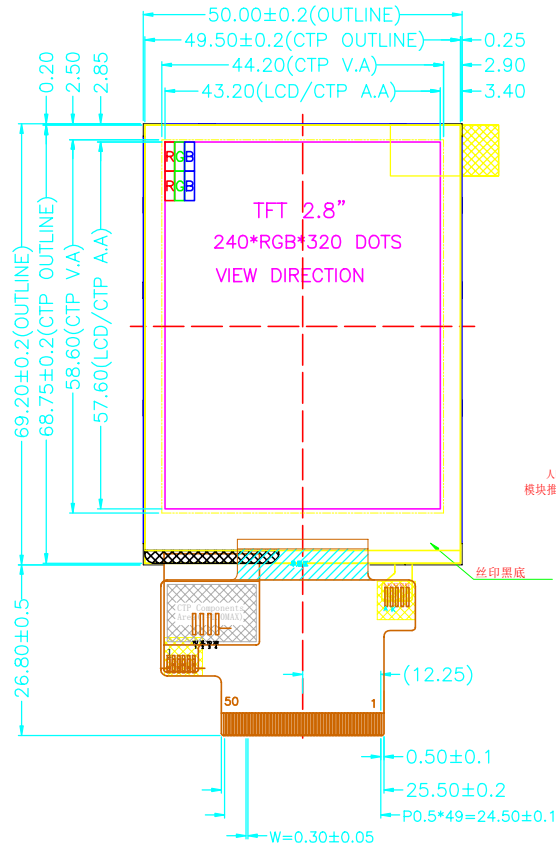
Signature:

Date:



REV.	DESCRIPTION	REVISER	DATE
V0	NEW	RONG	2015 05 20
V1	修改BL & INTERFACE	RONG	2016 05 12
V2	Delete double tape	Aleck	2019 09 27

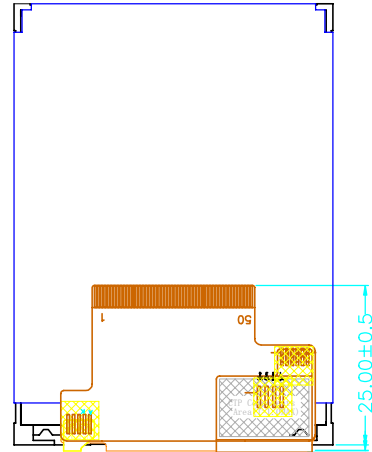
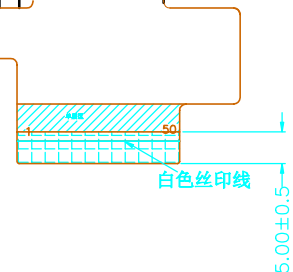
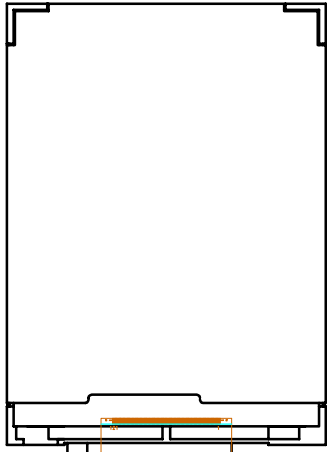
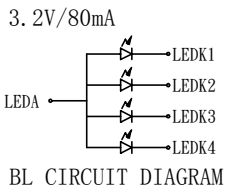
PIN	SYMBOL
1	LEDK
2	LEDA
3	NC
4	VCI
5	IOVCC
6	IM0
7	IM1
8	IM2
9	IM3
10	GND
11	VS
12	HS
13	PCLK
14	DE
15	GND
16	DO
17	D1
18	D2
19	D3
20	D4
21	D5
22	D6
23	D7
24	D8
25	D9
26	D10
27	D11
28	D12
29	D13
30	D14
31	D15
32	D16
33	D17
34	D18
35	D19
36	D20
37	D21
38	D22
39	D23
40	RESET
41	RD
42	CS
43	WR
44	DCX/SCL
45	SDI
46	SDO
47	TP_SCK
48	TP_SDA
49	TP_IRQ
50	TP_RES



人眼 (EYES)  
模块推荐使用方向

丝印黑底

Conductor  
Stiffener  
0.30±0.05 (FPC+PT)



FPC弯折示意图  
FPC展开出货

- NOTES:
- 1.DISPLAY TYPE: 2.8" TFT
  - 2.VIEWING DIRECTION: 80/80/80/80
  - 3.LCD DRIVE IC: ST7789V
  - 4.POLARIZER MODE: TRANSMISSIVE/POSITIVE
  - 5.RECOMMEND CONNECTOR: FH19S-50S-0.5SH
  - 6.OPERATING TEMP: -20° C~+70° C
  - 7.STORAGE TEMP: -30° C~+80° C
  - 8.UNMARKER TOLERANCE: ±0.20
  - 9.REQUIREMENTS ON ENVIRONMENTAL PROTECTION: RoHS

# Kingtech Group Co.,Ltd.

Unspecified Tolerance:	±0.20	UNITS: mm	DATE:	MODEL NUMBER :		SHEET: 1 Of 1
DESIGN BY:	RONG			PV02808LZR50H-C		
CHECKED BY:					DRAWING DESCRITUON:	MODEL
APPROVED BY:						

